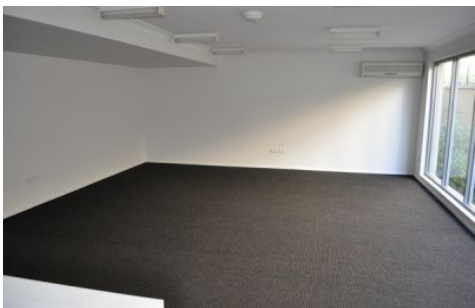


# Hardy's 1



## Mona Vale

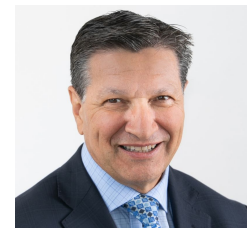
Spacious dual access office, air conditioned kitchen and bathroom. Right next door to Post office, Car Parking tower, Gateway Medical Centre, major shops, bus stop and cafe's. Join other professionals such as accountants, solicitors and other retailers in this professional building. :-

- Air Con
- Kitchenette & Modern Amenities
- Signage opportunities
- 23 sqm Balcony (approx)
- Spread over two levels

**Price** : \$32,500 + GST  
**Building Size** : 103 sqm  
**Land Size** : 103 sqm  
**View** : <https://www.hardysrealty.com.au/lease/nsw/northern-beaches/mona-vale/commercial/offices/6605790>



**Lincoln Gutherson**  
02 9997 4444



**John Vaccaro**  
02 9997 4444