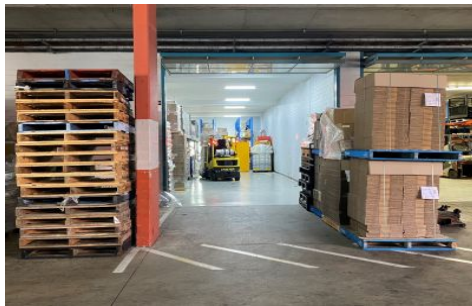


Hardy's 1



Warriewood

The unit is in one of Warriewood's best known Business Estates central to the industrial precinct and with direct access to Mona Vale Road. Positioned on the ground level of the development, with all weather loading, this is a functional clear-span unit that will be suitable for many industrial uses.

Features include.

- * Immaculate presentation throughout
- * Single-level, open plan design unit
- * Clear-Span warehouse with 4 meter plus clearance
- * Large bi-fold access door to the warehouse
- * Good vehicle access for delivery & dispatch
- * Male & female amenities
- * 3 Car Spaces

Price : \$1,200,000 + GST
Building Size : 227 sqm
View : <https://www.hardysrealty.com.au/sale/nsw/northern-beaches/warriewood/commercial/industrial/6487950>



Robert Henderson
02 9997 4444



Lincoln Gutherson
02 9997 4444