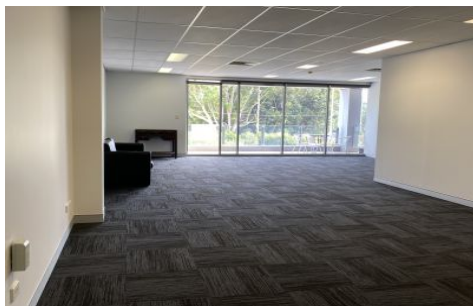


Hardy's 1



Mona Vale

Offered to the market FOR LEASE OR SALE is this immaculate strata commercial office ready for your company to occupy. Located on the second floor of the MVB, Warriewood's most prominent commercial building, the office has an open plan layout and great NORTHERN exposure. Just renovated with nothing to spend, this property is a must to inspect.

Features include:

- * Located on the sunny north side of the building
- * Flexible open plan layout
- * New commercial grade carpet & paint work
- * A light and bright north facing covered balcony area
- * Professional presentation throughout the building
- * Internet - fiber & NBN available to the suite

Price : SALE: \$495,000 / LEASE: \$38,000 PA Nil GST

Building Size : 106 sqm

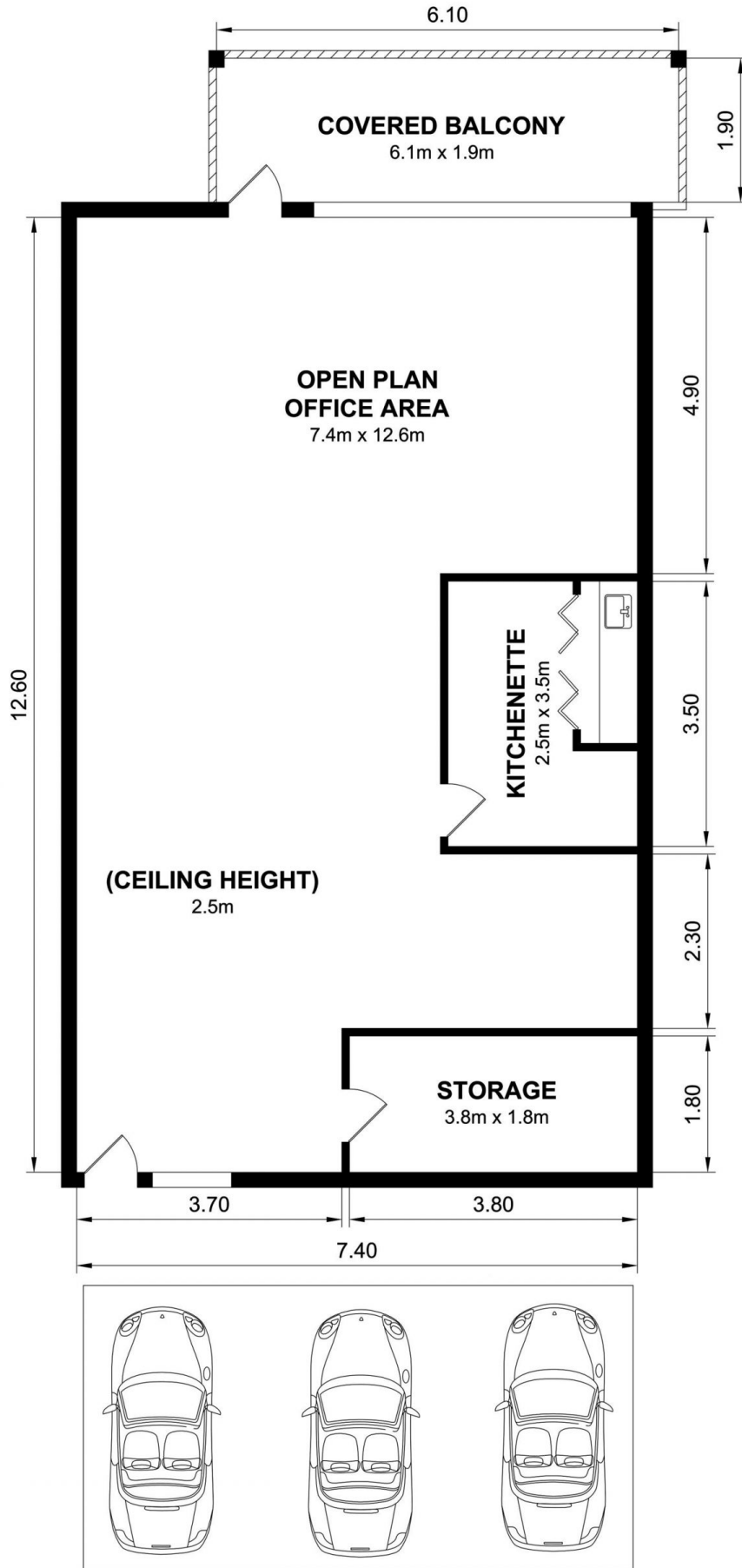
View : <https://www.hardysrealty.com.au/sale/nsw/northern-beaches/mona-vale/commercial/offices/6472251>



Robert Henderson
02 9997 4444



Lincoln Gutherson
02 9997 4444



34/90 Mona Vale Road, Warriewood

Measurements are approximate. Not to scale. Illustrative purposes only. Open2view does not take any responsibility for any information supplied.