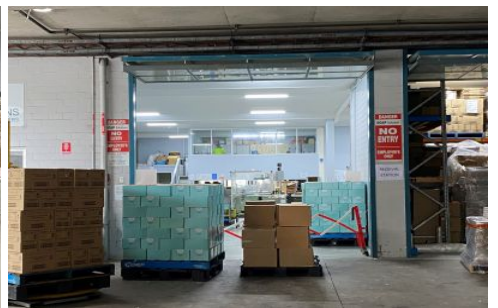


Hardy's 1



Warriewood

The unit is in one of Warriewood's best known Business Estates central to the industrial precinct and with direct access to Mona Vale Road. Positioned on the ground level of the development, with all weather loading, this is a functional clear-span unit that will be suitable for many industrial uses.

Features include.

- * Immaculate presentation throughout
- * Single-level unit with small mezzanine utility room or office
- * Clear-Span warehouse with 4 meter plus clearance
- * Large bi-fold access door to the warehouse
- * Functional open plan design
- * Good vehicle access for delivery & dispatch
- * Male & female amenities

Building Size : 226 sqm

View : <https://www.hardysrealty.com.au/sale/nsw/northern-beaches/warriewood/commercial/industrial/6471539>



Robert Henderson
02 9997 4444



Lincoln Gutherson
02 9997 4444